



## Our Grandest Gala Yet

The 9th annual Captains of Industry Gala reached new heights of achievement in community support and sponsorship.

Held September 13 at the Washington State Convention & Trade Center, the event upheld its tradition as a night of excellent food and fellowship. The night also will be remembered for significant announcements and moving speeches by Tabor's Crystal Eagle awardees. Here are the highlights:

"First and foremost, Tabor 100 will be an organization that is the best example of 'Power through Unifying Communities,'" said Tabor President Ollie Garrett. "We have a strong desire to build relationships with other organizations that share our views on economic development, and we want to build on the areas of balanced common interest."

Puget Sound Energy announced a partnership with Tabor 100 to implement a Clean Energy Scholarship Program. The \$34,000 program funded by the Energy Efficiency Services division of PSE will grant \$10,000 awards to three college students to encourage their pursuit of a career in a clean energy field.

"We're pleased to work with Tabor 100 to provide this opportunity for African American students. Academic scholarships are a natural extension of our investment in efficiency product development and educational programs," said Cal Shirley, vice president of Energy Efficiency Services for PSE.

### Governor Leads Guest Speakers at September 27 Members Meeting

Gov. Christine Gregoire is scheduled to speak to members at the monthly meeting, which begins Saturday, Sept. 27 at 10 a.m. Also to speak will be Rep. Eric Pettigrew, Rep. Bob Hasegawa, and Karen Wade of Washington State Democrats.



The Endowment for the William Bradford Scholarship Fund received \$20,000. The City of Seattle's Department of Executive Administration and Wal-Mart each contributed \$10,000. Education Committee Chair Kevin Washington also announced a new scholarship from PEMCO Insurance.

"Tabor is proud that 83 cents of every dollar raised at the Gala goes to educational programs and scholarships," said Garrett. "And 93 cents of every dollar contributed to us goes toward our programs. Only 7 cents goes toward overhead because our volunteers do all the work!"



**New Feature**

# Sun's Energy Brightens Outlook for Green Power



**Cal Shirley**

If you tell people you're from the Puget Sound area, they might smile politely if you mention solar power. But the fact is, despite our cloudy skies, we are a shining light for renewable energy, including solar.

More than 300 Puget Sound Energy customers now make at least part of their power from a home or business solar system. With PSE's net-metering program, customers get credits whenever they generate more power than is being used. When the customer needs more energy than they are producing, they can then draw on the accumulated credits and save on their electric bill. Customers can also take advantage of yearly payments from the state of Washington based on how much energy their system produces, which are typically in the range of \$300 to \$600, and can utilize a one-time federal tax credit of up to \$2,000 to help offset the cost of buying and installing their system. Going solar isn't cheap, with a system powerful enough to meet 30 to 50 percent of the average home's electrical needs costing \$20,000 or more, making the payoff period about 15 to 20 years. For many people, though, the payoff in doing something good for the environment is much more immediate, and meaningful.

Don't want to put solar panels on the roof? Fortunately, there is a solution that might be easier – signing up for PSE's Green Power Program. This option lets customers purchase power sourced exclusively from wind, solar or biomass generation. For a few dollars a month, residential customers can go totally green. Of course, we can't send the electrons directly to your home or business, but as a Green Power participant with PSE or your local electric utility, you'll help support the development of new renewable resources in the Northwest. Your participation in Green Power helps make that happen, both at PSE and elsewhere, by proving there's demand for renewable energy.

Today, more than 21,000 customers have joined PSE's Green Power Program, including nearly 900 business customers. That's a big gain from the 17,000 customers we had at the end of 2006. For many companies, it's a way to connect with customers who are increasingly thinking of environmental issues when they choose where to shop or with whom to do business.

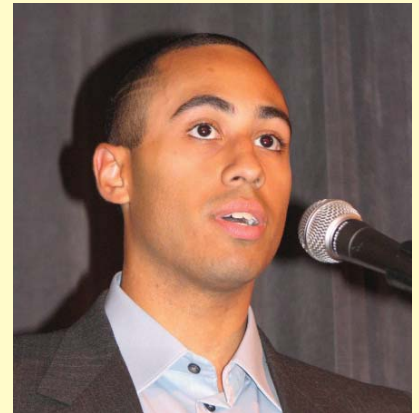
Solar? In Rain City? Believe it, and if your home or business is a little too shady to capture the sun, then sign up for the Green Power Program and go green with a few mouse-clicks at PSE.com. Once you do, I have no doubt you will be the one smiling – even under cloudy Puget Sound skies.

For more on PSE's support of customer solar power and how to sign up for the Green Power Program, go to PSE.com.

*Cal Shirley is vice president, Energy Efficiency Services, for Puget Sound Energy.*



## Scholarship Recipients



The Dr. William D. Bradford Scholarship Award recipient Tristan Bradford.



Pemco Insurance Scholarship Award recipient Bradley Burmester.



# 2009 Crystal Eagle Honorees

The Crystal Eagle Award Program was founded in 2002 by past President Dr. Leon F. "Skip" Rowland, to recognize community leaders and Tabor members who have contributed to the business development of the African American community or the organizational development of Tabor 100. The first awards were presented in 2003.

The Crystal Eagle symbolizes strength, vision, and determination and represents the highest level of recognition and appreciation that our organization can bestow. There are two categories of Crystal Eagle awards: (1) for community members (external awards), (2) for Tabor 100 members (internal awards). The external awards are for: International Leadership, Economic and Business Leadership, Educational Leadership, Legislative Leadership, Community Leadership, Media Leadership, and Lifetime Achievement. The internal award for Tabor 100 members is for Outstanding Service.

Candidates are nominated for awards through the Tabor 100 committees, ratified by Tabor's Board of Directors and approved by the membership.



The following are 2008 award recipients:

**Debbie Bird** - *Community Leadership*  
For outstanding community leadership, in the development of awareness and concern for minority and underprivileged communities, as the Safeco Insurance executive assigned to the Safeco Community Center at 23rd and Jackson Streets in Seattle.



Debbie Bird



Bob Watt

**Grace Crunican** - *Business Development*  
For outstanding leadership in business development by contributing to the creation of business development opportunities for minorities and people of color, above and beyond the call of duty.



Steve Leahy

**Steve Leahy** - *Economic Development*  
For unwavering commitment to the design and development of the Urban Enterprise Center of the Greater Seattle Chamber of Commerce and for outstanding leadership in cross-cultural business and multicultural marketing practices and principles throughout the Puget Sound region.

**Nancy Locke** - *Business Development*  
For outstanding leadership in business development by contributing to the creation of business development opportunities for minorities and people of color, above and beyond the call of duty.



Grace Crunican

**Nate Miles** - *Community Leadership*  
For outstanding leadership in the development and promotion of community-based programs that provide high-quality/high-return learning experiences and enhance the quality of life for people of color in the Puget Sound region.

**Cal Shirley** - *Educational Achievement*  
For assion and determination in assisting the "new guard" of our workforce in obtaining a solid education and career opportunities.

**Bob Watt** - *Lifetime Achievement*  
For a lifetime of service to the State of Washington, the Puget Sound region, and the Greater Seattle Metropolitan Area. Bob Watt's contributions are especially appreciated by the communities of color he so graciously supported throughout his professional life.

Nancy Locke and Nate Miles

# Tabor Board

## Executive Board

President Ollie Garrett, PMT Solutions  
206-399-8036 president@tabor100.org

Vice President Lewis Rudd, Ezell's Chicken  
206-772-1925 lewis@ezellschicken.com

Secretary Karen Primeau  
Platinum Group, 206-380-8773  
karen@platinumbusinessgroup.com

Treasurer Glenn Gregory  
Obsidian Investment Advisors  
425-558-5658 gggregory@obsidianllc.com

## Board Chairpersons

Economic Development  
Chair Crystal Fincher, Retail Lockbox  
Crystal@retaillockbox.com

Education Committee  
Chair Kevin Washington  
206-935-1228 washinkc@comcast.net

Fund Development Committee  
Chair William Dudley, J.C. Consulting  
425-917-8288 william@jcsireal.com

Gala Committee  
Chair Christa Peterson  
gala@tabor100.org

Government Affairs Committee  
Chair Cos Roberts, Urban Tech Systems  
206-389-8104 croberts@utechsystems.com

Membership Committee  
Chair Mark Scott mscott3@comcast.net

Public Affairs Committee  
Chair Marcee Jones, Trek & Travel  
206-851-8644 publicaffairs@tabor100.org

*Tabor 100 is a 501c3 non-profit association of individuals and business people dedicated to economic development, educational excellence and social justice for all people.*

*Its efforts focus on elevating dialogue regarding how people of color can be full participants in the Washington State economy.*

## Gala Glimpses



Quality of care for patients  
is a top priority for  
**Eli Lilly and Company**  
and we're committed to better  
patient health. Visit us at  
[www.lillyforbetterhealth.com](http://www.lillyforbetterhealth.com).

